



AHSC-14P

PORTABLE HEAT PUMP Cooling and heating in one system!

AIRREX has designed portable heat pumps that can be utilized all year round applications.

AIRREX Portable heat pump has the ability to be switched from cooling to heating mode.

In cooling mode a heat pump works the same as an ordinary air conditioner(A/C).

In heating mode the unit absorbs the heat from the refrigeration cycle and converts it into warm air(HEATER).

1 year warranty and 3 years on compressor.



Strong Points



Quiet



Thermostats



Intensive Air Conditioning



Movable & Lockable



Energy saving



Automatic



Time Setting



Certification



Portable Heat pump System

Cooling and heating in one system!



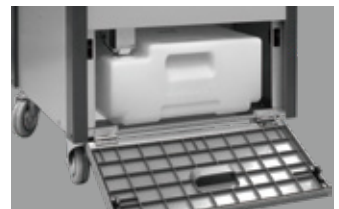
Louver type

You can change wind direction up, down, right, or left.



Mobility

(4) 4" Swivel Casters
(2) Locking Casters



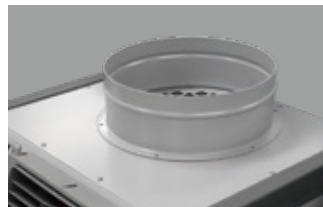
Condensate Tank

5 Gallon Tank Auto Shut off



4-Way Reversing Valve

Core valve for hot and cool operating system



Applications

Indoor or Outdoor
Cooling Drying



LCDI Protection

LCDI Recessed Power Cords
Standard 115 Volt Power
ETL Certified



Digital Controls

Temperature Range: Cool: 61°F to 86°F
Heat: 68°F to 99°F
High/Low Fan Speed, Programmable / Timer
Easy Cool and Heat changeable

AHSC-14P Specifications



SPECIFICATIONS				Heat Pump					
				AHSC-14P					
Capacity Rating Condition	Cooling	(35°C/95°F 40%)	Btu/h	13,600 Btu/h	Fans	Fan Type	-	Centrifugal	
	Heating	(21°C/70°F 50%)	Btu/h	13,000 Btu/h		Outdoor	Air Volume (High/Low)	CFM	820 / 750
	Dehu	Max. (32°C/89°F 80%)	gal/day	27			Max. External Static Pressure	inchH2O	0,25
Nominal (27°C/80°F 60%)		gal/day	15	Max. Equivalent Duct Length			ft	60	
Electrical Characteristics	Voltage	60 Hz	Volts	1 Phase, 115 V~			Sound Level	With Exhaust Duct	High / Low
	Power Consumption	Cooling	kW	1,3	Without Exhaust Duct	High / Low		dB(A)	59 / 55
		Heating	kW	1,16	Air Filter	Type	Indoor	-	Alu+SUS mesh
	Current	Cooling	A	11.7		Outdoor	-	Alu+SUS mesh	
		Heating	A	10.6	Condensate	Tank	Capacity	gal	5
	Fuse Size	A	15	Auto Pump		-	Optional		
Min. - Max. Voltage	V	98 - 127 V~	Refrigerant	Type	-	R-410A			
Power Cord	NEMA Plug	-		5 - 15	Weight	Net Weight	lbs	176	
	Gauge	-	14 AWG (3-core)	Dimensions		W x D x H	inch	22 x 25 x 49	
	Length	ft	10		Operating Conditions	Min. - Max.	Cooling	°F	61~115 (16~46°C)
Fans	Indoor	Fan Type	-	Centrifugal		Safety Device	High Pressure Switch		○
		Cooling Air Volume (High/Low)	CFM	440 / 390			Low Pressure Switch		○
		Heating Air Volume	CFM	370	Compressor 3min, Delay Timer			○	
		Dehu Air Volume	CFM	410	Thermostat Protector for Compressor			○	
		Max. External Static Pressure	inchH2O	0,3	Fan Motor Protection			○	
		Max. Equivalent Duct Length	ft	30	Automatic Full Tank Shut-Off			○	
		Type / Size	inch	Louver	Tank Position Dectector			○	

※ Designs and specifications of products are subject to change without prior notice for the improvements. The colors of products may be different due to the printing process.

Hepa filter optional kit

Optional Filter kit ((A)HSC-14P/18P/24P)



Ideal Applications for Airrex Portable Air Conditioner



- Industrial Sites** High temperature work sites, car manufacturing plants, ship building yards and steel mills
- Repair Shops** Car repair shops, aircraft workshops, farm machinery workshops, gas stations & parking facilities
- Heat Generating Equipment** Server rooms and machine rooms
- Leisure / Outdoor Event Venues, Farm, & Livestock Ranges**

Airrex USA Office Mailing Address:

2031 Exchange Parkway, Waco, TX 76712

888-535-8841

www.airrexusa.com

sales@airrexusa.com