



HSC-14P

Cool Solutions by Airrex! Approved technology with 37 years experience in the market! Airrex Spot Cooler 1.2Ton

Airrex spot coolers operate in air temperatures from 61°F to 115°F. These air conditioners utilize eco-friendly R-410A refrigerant.

Airrex spot cooler air conditioners may require a fresh air supply for proper operation. Includes removable, washable air filters for easy maintenance. Thermostatically protected compressor includes high and low pressure warnings. Moves easily on four swivel casters (2 locking). 13,600 BTU Cooling feature two 5" diameter front cold air discharge and 12" diameter top warm air discharge.

Optional Warm Air Duct includes ducting and a 2' x 2' ceiling flange for warm air exhausting.

ETL listed. Optional Condensate Pump that plugs directly into the portable air conditioner.

1 year warranty and 3 years on compressor.

Strong Points



Quiet



Thermostats



Intensive Air Conditioning



Movable & Lockable



Energy saving



Automatic



Time Setting

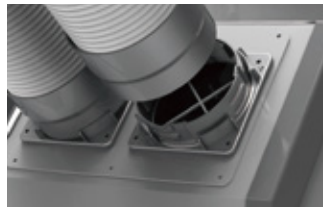


Certification



Hot Air Exhaust

Automatic Fan Speed Controller
Operating Range : Up to 115°F



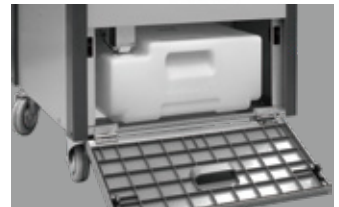
Twist & Lock

(2) 5"x14"
Easy to disassemble & store



Mobility

(4) 4" Swivel Casters
(2) Locking Casters



Condensate Tank

5 Gallon Tank Auto Shut off



Spot Cooling

Directed Cooling
13,600Btu/h



Digital Controls

Programmable Timer
Temperature Range: 61°F to 86°F
High/Low Fan Speed / Auto Restart



LCDI Protection

LCDI Recessed Power Cords
Standard 115 Volt Power
ETL Certified



Applications

Indoor or Outdoor
Cooling Drying

HSC-14P Specifications

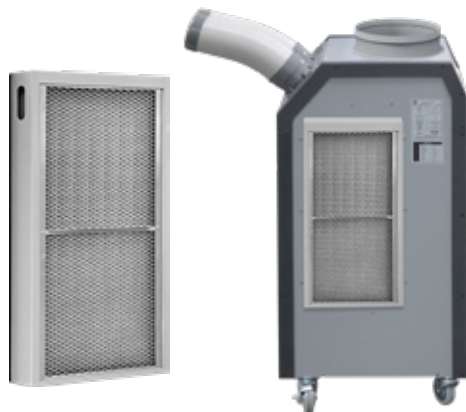


SPECIFICATIONS				Air-Cooled		Fans	Fan Type		-	Centrifugal
				HSC-14P			Outdoor		Air Volume (High/Low)	CFM
Capacity Rating Condition	Cooling	(35°C/95°F 40%)	Btu/h	13,600 Btu/h	Sound Level	Max. External Static Pressure	inchH2O	0.25	60	
	Heating	(21°C/70°F 50%)	Btu/h	-		Type / Size	inch	Top Flange / 12" (Ø300)		
	Dehu	Max. (32°C/89°F 80%)	gal/day	27		With Exhaust Duct	High / Low	dB(A)		56 / 53
		Nominal (27°C/80°F 60%)	gal/day	15		Without Exhaust Duct	High / Low	dB(A)		58 / 55
Electrical Characteristics	Voltage	60 Hz	Volts	1 Phase, 115 V~	Air Filter	Type	Indoor	-	Alu+SUS mesh	
	Power Consumption	Cooling	kW	1.27		Type	Outdoor	-	Alu+SUS mesh	
		Current	Cooling	A	11.6	Tank	Capacity	gal	5	
	Heating		A	-	Auto Pump		-	Optional		
	Fuse Size		A	15	Refrigerant	Type	-	R-410A		
	Min. - Max. Voltage		V	98 - 127 V~	Weight	Net Weight	lbs	172		
Power Cord	NEMA Plug		-	5 - 15	Dimensions	W x D x H	inch	22 x 25 x 49		
	Gauge		-	14 AWG (3-core)		Operating Conditions	Min. - Max.	Cooling	°F	61~115 (16~46°C)
	Length		ft	10			Heating	°F	-	
				Dehumidification	°F		55~115 (13~46°C)			
Fans	Indoor	Fan Type	-	Centrifugal	Safety Device	High Pressure Switch			○	
		Cooling Air Volume (High/Low)	CFM	420 / 370		Low Pressure Switch			○	
		Heating Air Volume	CFM	-		Compressor 3min, Delay Timer			○	
		Dehu Air Volume	CFM	390		Thermostat Protector for Compressor			○	
		Max. External Static Pressure	inchH2O	0.3		Fan Mortor Protection			○	
		Max. Equivalent Duct Length	ft	30		Automatic Full Tank Shut-Off			○	
		Type / Size	inch	Duct / 5" (Ø125) x2		Tank Position Dectector			○	

※ Designs and specifications of products are subject to change without prior notice for the improvements. The colors of products may be different due to the printing process.

Hepa filter optional kit

Optional Filter kit ((A)HSC-14P/18P/24P)



Ideal Applications for Airrex Portable Air Conditioner



- Industrial Sites** High temperature work sites, car manufacturing plants, ship building yards and steel mills
- Repair Shops** Car repair shops, aircraft workshops, farm machinery workshops, gas stations & parking facilities
- Heat Generating Equipment** Server rooms and machine rooms
- Leisure / Outdoor Event Venues, Farm, & Livestock Ranges**

Airrex USA Office Mailing Address:

2031 Exchange Parkway, Waco, TX 76712

888-535-8841

www.airrexusa.com

sales@airrexusa.com